

Shotley Bridge Redevelopment – Update

Adult Health and Wellbeing Overview and Scrutiny Committee – 8th February 2024



safe • compassionate • joined-up care

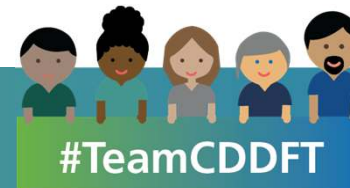


Project Principles



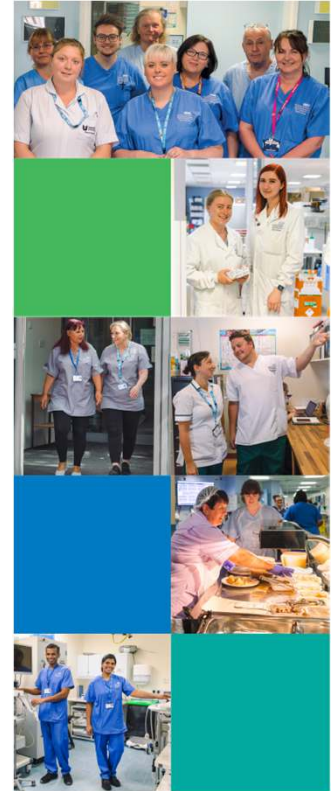
- Provide a modern, technologically mature, fit for purpose community healthcare facility serving population of Derwentside
- Transforming models of care and estate solutions
- Working as part of the County Durham and wider ICB healthcare system
- Continuity of existing services
- Ongoing stakeholder engagement
- A part of the local community

safe • compassionate • joined-up care



Progress Update

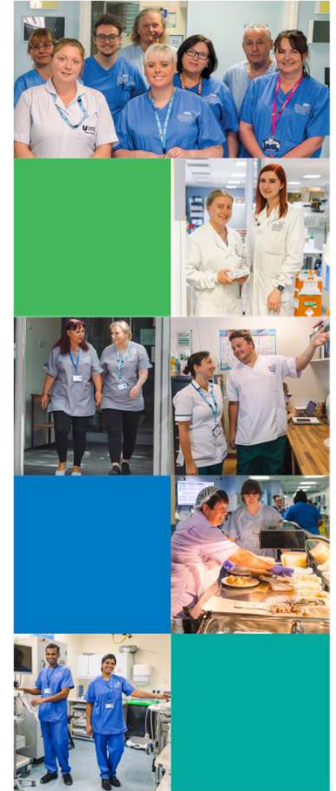
- Value engineering exercise undertaken supported by NHP to deliver a viable scheme maintaining all existing clinical services
- Design developed to accommodate activity at current levels, potential expansion plans revised, alternative models reviewed – e.g. virtual clinics, home care expansion, extended hours
- Non-clinical space kept to minimum to accommodate staff health and well being, but improve on existing offer – café, communal areas, external courtyards
- Re-organisation of clinical areas and adjacencies to optimise space utilisation and staff/patient flow
- Physical external hospital design unchanged, external plant internally accommodated
- New design offered a space reduction of 1400sqm



Proposed Site Layout



- Rationalised service yard
- Improved ambulance drop off
- Improved patient drop off
- Improved siting for mobile radiology
- No. of site entrances reduced to 2 – 1no. entrance to southeast boundary omitted
- Maintained existing red line boundary
- Building sits within reduced footprint, so less remediation
- Route and access to Coast to Coast cycle path retained
- 7m Landscape buffer to ground floor inpatient ward
- Discrete screened body transfer bay retained with direct access into IPU for privacy
- Parking numbers updated to reflect changes (Reduction of 19no. parking spaces). EV chargers grouped to reduce costs.



safe • compassionate • joined-up care

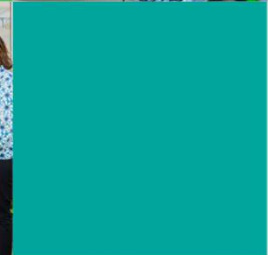


Assurance and Approval

- NHP clinical arm have been instrumental in the reviews of clinical model, design considerations, option appraisals and are supporting of the re-design process
- CDDFT, NHP and the ICB remain committed to delivering the new SBH scheme
- Revised design and costs submitted to NHP for consideration by investment committee end of November 2023
- Trust has responded to queries about commercial model and provided external advice
- Approval to progress the design is awaited from NHP investment committee



County Durham
and Darlington
NHS Foundation Trust



#TeamCDDFT



www.cddft.nhs.uk

safe • compassionate • joined-up care

Next Steps

- Next stage design and a refresh of the OBC remains dependent on decision by NHP
- ALL opportunities to accelerate the programme will be explored
- The programme timeline and scheme completion date will need to be reviewed



#TeamCDDFT



www.cddft.nhs.uk

safe • compassionate • joined-up care



County Durham
and Darlington
NHS Foundation Trust

Thank You

Questions?



www.cddft.nhs.uk

safe • compassionate • joined-up care